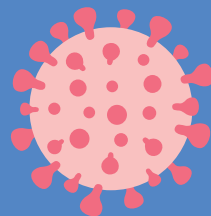


What You Must Know for Coronavirus Disease 2019 (COVID-19): Early Testing and Detection



Why is early testing and detection important?

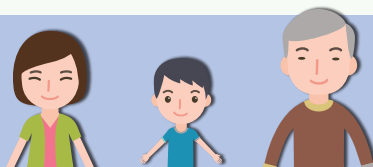


As some people infected with COVID-19 only have mild symptoms, **members of the public are advised to seek medical advice promptly when feeling unwell (even if having very mild symptoms only)**, so that appropriate diagnosis and management can be given at the earliest possible time.

Apart from the accident and emergency departments of public hospitals and general out-patient clinics (GOPCs), **you may also visit private clinics and hospitals**. You can proactively make a request to your doctor for testing when there is any suspicion. **The Department of Health (DH) provides free testing of COVID-19 for private doctors.**



How can I return the specimen?



You may return the specimen by yourself or family members/relatives/friends to one of the 13 collection clinics of DH or one of the 18 GOPCs of the Hospital Authority on the same day of specimen collection.

Please refer to the following webpage for the list of collection clinics:

https://www.chp.gov.hk/files/pdf/list_of_collection_points_en.pdf



You may also choose to use door-to-door specimen collection service at a charge:

GOGO VAN

www.gogovan.com.hk/covid-19-testing-en
(enquiry phone number: 5681 4989)



Pickupp

hk.pickupp.io/en/blog/COVID-19-sample
(enquiry email: hk@pickupp.io)



The most important thing is to seek medical advice immediately and get testing done whenever symptomatic (even if having very mild symptoms).

For more information, please visit COVID-19 Thematic Website (www.coronavirus.gov.hk)



衛生防護中心
Centre for Health Protection



衛生防護中心網站
Centre for Health Protection Website
www.chp.gov.hk



衛生防護中心Facebook專頁
Centre for Health Protection Facebook Fanpage
fb.com/CentreforHealthProtection

衛生署健康教育專線 **2833 0111**
Health Education Infoline of the Department of Health



衛生署
Department of Health

Produced in June 2020
二零二零年六月製作